

AGUAJE EXTRACT

**Mild Phytoestrogens
For Breast Enlargement
For Unidentified Complaints in
Postmenopausal and
Premenopausal Periods**

- **AGUAJE EXTRACT**
(Oil, for foods)
- **AGUAJE EXTRACT-P**
(Powder, for foods)
- **AGUAJE EXTRACT -L**
(Water-soluble emulsion, for foods)
- **AGUAJE POWDER**
(Powder, for foods, Build-to-order manufacturing)



Mild Phytoestrogens
Breast Enlargement
For Unidentified Complaints in Postmenopausal and
Premenopausal Periods

AGUAJE EXTRACT

1. Introduction

Aguaje (Moriche palm) belonging to a palm is a fruit of *Maritia flexuosa* cultivated in riverside of Amazon in Peru and Brazil. (Fig. 1) The shape is oval and the surface is covered with scaly skin. The fruit weighing 40-50 g contains a large seed and the edible part contains yellow to orange carotenoids. The taste is like a steamed sweet potato. The fruit paste diluted with water is popular drink in the area and fruits are used for processed foods such as ice candy, cooking oil and dietary supplements.

As constituents in Aguaje, fatty acids and those triglycerides¹⁾ and polysaccharides^{2, 3)} have been reported. As health benefitting effects, cholesterol lowering⁴⁾, anti-thrombogenic⁵⁾ and anti-oxidative activities have been reported^{6, 7)}.

Moreover, Aguaje is said to enlarge breast and had been considered to contain phytoestrogens. However, the active ingredients had not been identified.



Fig. 1. Aguaje fruit (left) and whole plant

References)

- 1) Ferreira B.S., De Almeida C. G., Faza L.P., De Almeida, Diniz C. G., da Silva V. L., Grazul R. M., Le Hyaric M. Comparative properties of Amazonian oils obtained by different extraction methods. *Molecules*, 16, 5875-5885 (2011).
- 2) Cordeiro L. M., de Almeida C. P., Iacomini M. Unusual linear polysaccharides:

- (1→5)- α -L-arabinan, (1→3)-(1→4)- α -D-glucan and (1→4)- β -D-xylan from pulp of buriti (*Mauritia flexuosa*), an edible palm fruit from the Amazon region. *Food Chem.* 173, 141-146 (2015).
- 3) Cantu-Jungles T. M., Almeida C.P., Iacomini M., Cipriani T.R., Cordeiro L.M. Arabinan-rich pectic polysaccharides from buriti (*Mauritia flexuosa*): an Amazonian edible palm fruit. *Carbohydr Polym.*, 122, 276-281 (2015).
 - 4) Aquino J. S., Soares J.K.B., Magnani M., Stamford T. C. M., Mascarenhas R. J., Tavares R. L., Stamford T. L. M. Effects of dietary Brazilian palm oil (*Mauritia flexuosa* L.) on cholesterol profile and vitamin A and E status of rats. *Molecules*, 20, 9054-9070 (2015).
 - 5) Fuentes E., Rodríguez-Pérez W., Guzmán L., Alarcón M., Navarrete S., Forero-Doria O., Palomo I. *Mauritia flexuosa* presents *in vitro* and *in vivo* antiplatelet and antithrombotic activities. *Evid. Based Complement. Alternat. Med.* 2013: 653257 (2013).
 - 6) Dos Santos M de F.G., Mamede R.V.S., Rufino M. do S.M., de Brito E.S., Alves R.E. Amazonian native palm fruits as sources of antioxidant bioactive compounds. *Antioxidants*. 4, 591-602 (2015).
 - 7) da Rocha Romero A.B., de Carvalho e Martins Mdo C., Moreira Nunes P.H., Ravenna Trindade Ferreira N., da Silva Brito A.K., Marinho da Cunha P.F., de Lima A., de Assis R.C., Moreira Araújo E. *In Vitro* and *in vivo* antioxidant activity of buriti fruit (*Mauritia Flexosa* L.F.). *Nutr Hosp.* 32, 2153-2161 (2015).

We studied chemical constituents in Aguaje for almost 4 years and found first in the world that the estrogen active ingredient of Aguaje is methoxyflavans. (Fig. 2.)

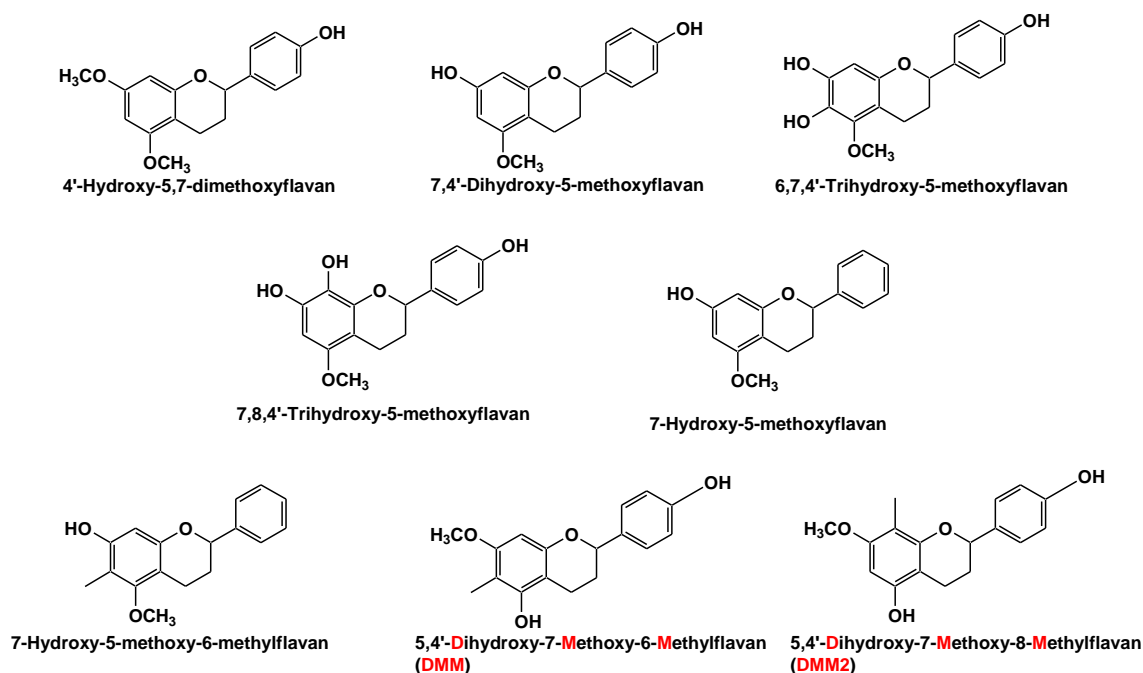


Fig. 2. Phytoestrogens in Aguaje

2. Estrogenic activities of Aguaje phytoestrogens

1) Estrogenic activity (Effect on estrogen-dependent cell proliferation)

MCF-7 cells (human breast adenocarcinoma cells (Fig. 5) proliferate depending on estrogen in medium and frequently used for evaluation of estrogenic activities of phytoestrogens and endocrine-disrupting chemicals.^{9, 10)}

We added Aguaje or soy constituents to MCF-7 cultured in estrogen free medium (with fetal bovine serum treated with charcoal and dextran) for 4 days. Cell proliferation was evaluated by MTT assay. As a result, multiple methoxyflavans exhibited significant cell proliferation at 1 μ M (Fig. 6). Among soy compounds, daidzein (1 μ M), genistein (0.08 μ M) and (*S*)-equol (0.03 μ M) showed cell proliferation similar to 7,8,4'-trihydroxy-5-methoxyflavan. Therefore, estrogenic activities of 5,4'-dihydroxy-7-methoxy-methylflavan (DMM) was the strongest, and the activity found at 0.1~1 μ g/mL.

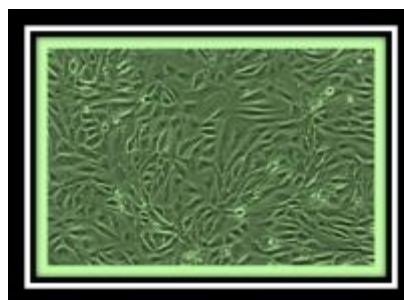


Fig. 3. MCF-7 cells

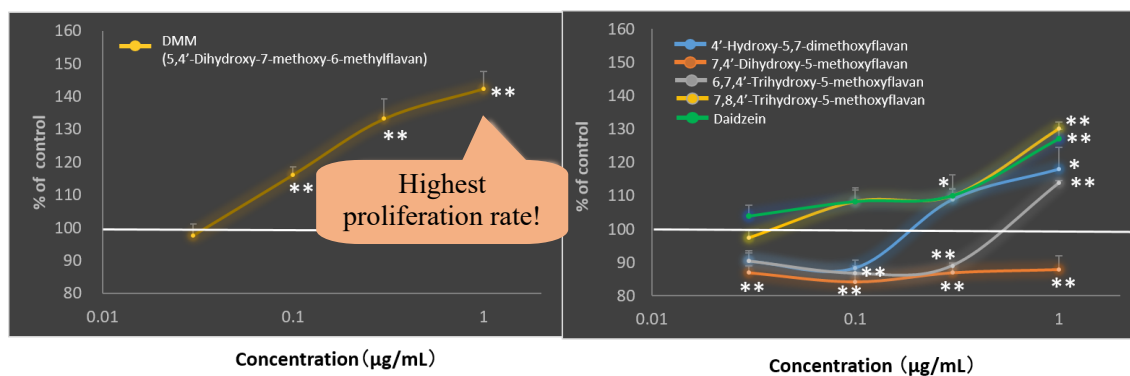


Fig. 4. Effects of Aguaje and Soy compounds on MCF-7 proliferation
Mean \pm SE (n=8) , **: $p < 0.01$, *: $p < 0.05$.

References

- 8) Yoshikawa M., Uemura T., Shimoda H., Kishi A., Kawahara Y., Matsuda H. Medicinal Foodstuffs. XVIII.: Phytoestrogens from the aerial part of *Petroselinum crispum* MILL. (Parsley) and structures of 6"-acetylapiin and a new monoterpene glycoside, petroside. *Chem. Pharm. Bull.*, 48, 1039-1044 (2000).
- 9) Matsuda H., Shimoda H., Morikawa T., Yoshikawa M. Phytoestrogens from the roots of *Polygonum cuspidatum* (Polygonaceae): Structure-requirement of hydroxyanthraquinones for estrogenic activity. *Bioorg. Med. Chem. Lett.*, **11**, 1839-1842 (2001).

2) E-CALUX (Estrogen-Chemical Activated Luciferase gene eXpression) assay

E-CALUX assay is internationally used method for detection of endocrine-disrupting chemicals and phytoestrogens. We examined action properties of 5,4'-dihydroxy-7-methoxy-6-methylflavan (DMM) by luciferase assay using human follicular cancer cells transfected luciferase gene (BG1 Luc4E2). As a result, we found that DMM is a full agonist (Fig. 7). EC50 values were 1.3 $\mu\text{g/mL}$. Thus, contribution of DMM to estrogenic activity of Aguaje extract is high. The result suggested that DMM is more important for estrogenic activity of Aguaje extract.

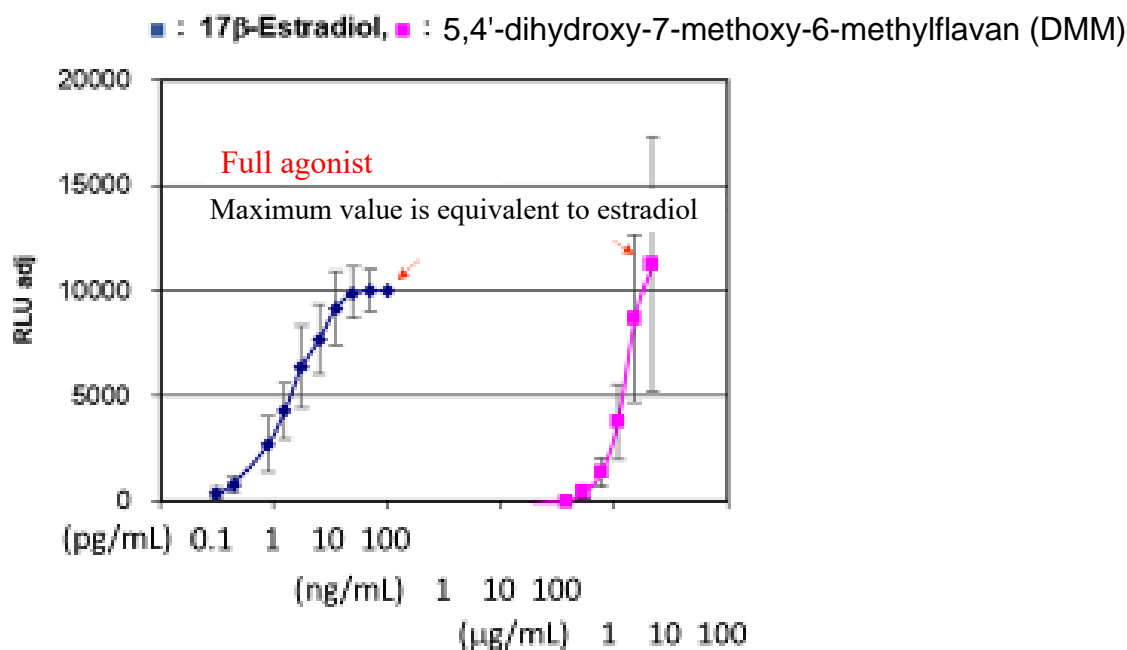


Fig. 5. Binding properties of Aguaje constituents to estrogen receptors

Mean \pm SD, n=4, 17 β -estradiol is a dominant internal estrogen.

3. Anti-estrogen-like activity

Anti-estrogenic-like activity which antagonize to estrogen can be evaluated briefly by culturing previously described MCF-7 in medium containing estrogens. We added Aguaje and soy constituents to this assay condition and cultured MCF-7 for 3 days. Then MTT assay was performed.

As a result, DMM (1 and 0.3 μM) suppressed cell proliferation as well as tamoxifen (breast cancer medicine). (Fig. 6) The effect was not found in soy constituents.

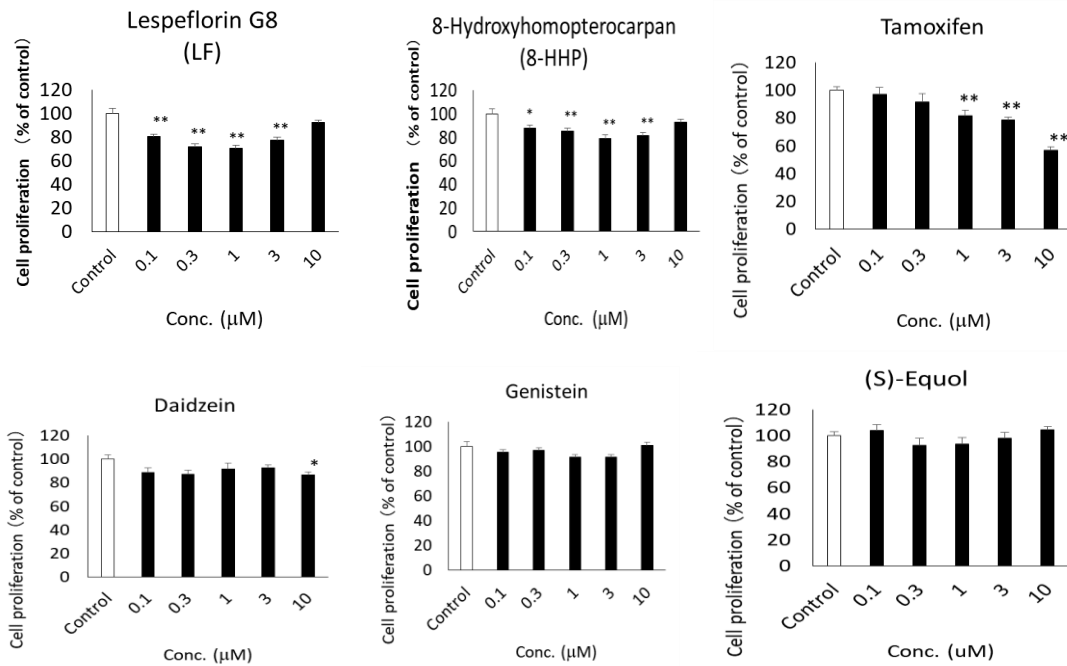


Fig. 6. Anti-estrogenic-like activity of Aguaje and soy constituents
 Mean±SE, n=10-12, **: $p < 0.01$, *: $p < 0.05$.

4. Effect on Uterus

1) Effect on endometrial carcinoma cell proliferation

Ishikawa cells (endometrial carcinoma cell, Fig. 7) proliferate estrogen-dependently.

We cultured Ishikawa cells under estrogen free condition and evaluated the effect of Aguaje constituents. As a result, DMM did not affect to the cell proliferation unlikely to tamoxifen (Fig. 8). Thus, DMM were found to enhance endometrial carcinoma.

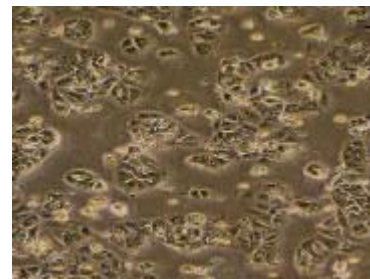


図 7. Ishikawa cells

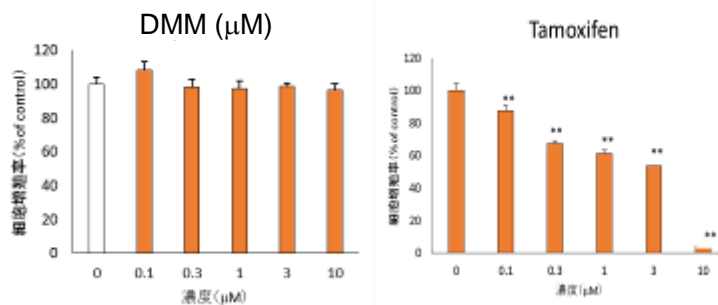


Fig. 8. Effect of Aguaje constituents and tamoxifen on Ishikwa cell proliferation.
 Mean±SE, n=10-12

2) Effect on mouse uterus weight

We gave orally estrogen fraction of Aguaje extract (DMM contents: 0.25%) to mice for 2 weeks. As a result, no significant increase in uterus weight was not observed (Fig. 12). Thus, Aguaje extract was found to give not effect on uterus.

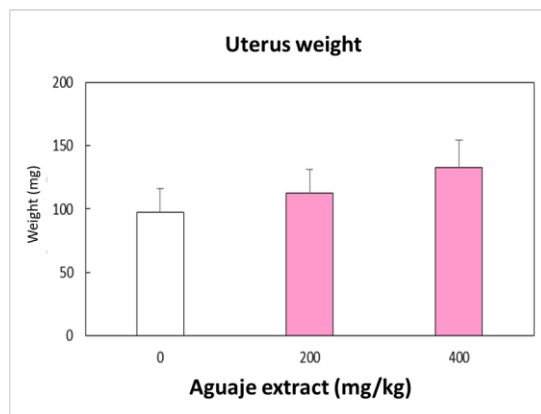


Fig. 9. Effect of Aguaje estrogen fraction on mouse uterus wight Mean±SE, n=6-7

Oral administration of soy genistein increases uterus weight in immature mice¹¹⁾ and matured mice (B6D2F1)^{12, 13)} Increase in endometrial tissue in normal range is caused by normal effect of estrogen and not concerned seriously. However some biologists announce that this kind of effects in soy isoflavon are not preferable, because it may relates to cancer initiation.^{14, 15)} As Aguaje extract cause significant increase in uterus weight, it has lower risk of side effect in on uterus.

References)

- 11) Breinholt V., Hossaini A., Svendsen G.W., Brouwer C., Nielsen E. Estrogenic activity of flavonoids in mice. The importance of estrogen receptor distribution, metabolism and bioavailability. *Food Chem. Toxicol.* 38, 555-564 (2000).
- 12) Song T.T., Hendrich S., Murphy P.A. Estrogenic activity of glycitein, a soy isoflavone. *J. Agric. Food Chem.* 47, 1607-1610 (1999).
- 13) Cline J.M., Franke A.A., Register T.C., Golden D.L., Adams M.R. Effects of dietary isoflavone aglycones on the reproductive tract of male and female mice. *Toxicol. Pathol.* 32, 91-99 (2004).
- 14) Kaludjerovic J., Chen J., Ward W.E. Early life exposure to genistein and daidzein disrupts structural development of reproductive organs in female mice. *J. Toxicol. Environ. Health A.* 75, 649-660 (2012).
- 15) Kanno J., Kato H., Iwata T., Inoue T. Phytoestrogen-low diet for endocrine disruptor studies. *J. Agric. Food Chem.*, 50, 3883-3885 (2002)..

5. Clinical trial, Effect of Aguaje extract on QOL (SF-36, Ver.2)

We evaluated the effect of Aguaje extract on female condition by open trial. After 28-day ingesting period of Aguaje extract (100 mg/day), questionnaire was performed to evaluate QOL condition.

○Method

1. Subjects : Japanese female in our company
2. Intervention : Ingested a capsule containing 100 mg of Aguaje extract once before breakfast
3. Test period : 28 days
4. Outcome : SF-36 (Ver. 2) questionnaire
 - (1) Vitality (2) physical functioning (3) bodily pain (4) general health perceptions
 - (5) physical role functioning (6) emotional role functioning (7) social role functioning
 - (8) mental health (9) Physical component summary: PCS (10) Mental component summary: MCS (11) Role/Social component summary: RCS

○SF-36 (Ver. 2)

- 1. general, would you say your health is:**
Excellent 1 Very good 2 Good 3 Fair 4 Poor 5
- 2. Compared to one year ago,**
 - Much better now than one year ago 1
 - Somewhat better now than one year ago 2
 - About the same 3
 - Somewhat worse now than one year ago 4
 - Much worse now than one year ago 5
- 3. The following items are about activities you might do during a typical day. Does your health now limit you in these activities? If so, how much?**
Yes, Limited a Lot (1) Yes, Limited a Little (2) No, Not limited at All (3)
 - a. Vigorous activities, such as running, lifting heavy objects, participating in strenuous sports
 - b. Moderate activities, such as moving a table, pushing a vacuum cleaner, bowling, or playing golf
 - c. Lifting or carrying groceries
 - d. Climbing several flights of stairs
 - e. Climbing one flight of stairs
 - f. Bending, kneeling, or stooping
- 4. During the past 4 weeks, have you had any of the following problems with your work or other regular daily activities as a result of your physical health?**
Yes (1) No (2)
 - a. Cut down the amount of time you spent on work or other activities
 - b. Accomplished less than you would like
 - c. Were limited in the kind of work or other activities

- d. Had difficulty performing the work or other activities
- 5. During the past 4 weeks, have you had any of the following problems with your work or other regular daily activities as a result of any emotional problems?**
- Cut down the amount of time you spent on work or other activities
 - Accomplished less than you would like
 - Didn't do work or other activities as carefully as usual
- 6. During the past 4 weeks, to what extent has your physical health or emotional problems interfered with your normal social activities with family, friends, neighbors, or groups?**
- Not at all 1 Slightly 2 Moderately 3 Quite a bit 4 Extremely 5
- 7. How much bodily pain have you had during the past 4 weeks?**
- None 1 Very mild 2 Mild 3 Moderate 4 Severe 5 Very severe 6
- 8. During the past 4 weeks, how much did pain interfere with your normal work (including both work outside the home and housework)?**
- Not at all 1 A little bit 2 Moderately 3 Quite a bit 4 Extremely 5
- 9. How much of the time during the past 4 weeks .**
- All of the Time 1 Most of the Time 2 A Good Bit of the Time 3 Some of the Time 4 A Little of the Time 5 None of the Time 6
- Did you feel full of pep?
 - Have you been a very nervous person?
 - Have you felt so down in the dumps that nothing could cheer you up?
 - Have you felt calm and peaceful?
 - Did you have a lot of energy?
 - Have you felt downhearted and blue?
 - Did you feel worn out?
 - Have you been a happy person?
 - Did you feel tired?
- 10. During the past 4 weeks, how much of the time has your physical health or emotional problems interfered with your social activities (like visiting with friends, relatives, etc.)?**
- All of the time 1 Most of the time 2 Some of the time 3 A little of the time 4 None of the time 5
- 11. How TRUE or FALSE is each of the following statements for you. (Circle One Number on Each Line) Definitely**
- True 1 Mostly True 2 Don't Know 3 Mostly False 4 Definitely False 5
- I seem to get sick a little easier than other people
 - I am as healthy as anybody I know
 - I expect my health to get worse
 - My health is excellent

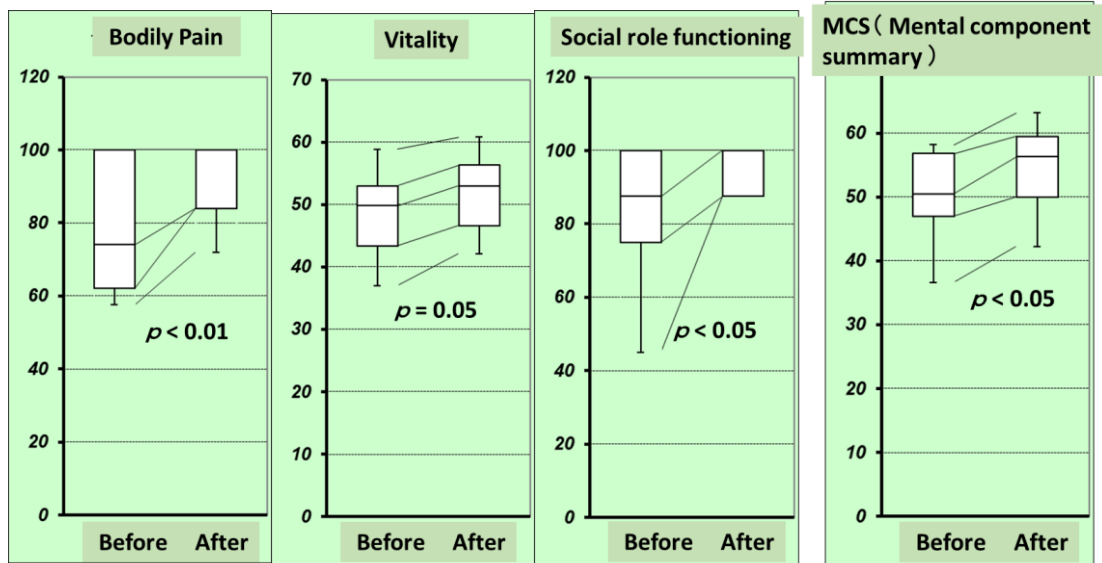


Fig. 10. Effect of Aguaje extract of female QOL status
Median with quartiles, n=17

As a result bodily pain, vitality, social functioning and mental component summary were significantly improved by Aguaje extract ingestion (Fig. 10). Thus, Aguaje extract enhances vitality and social functioning through ameliorating bodily pain.

6. Clinical trial, Randomized placebo-controlled clinical trial of Aguaje extract on anxieties during menstruation period

We conducted 8-week clinical trial of Aguaje extract on general malaise in healthy Japanese subjects.

【Methods】

(1) Subjects and registration criteria

Japanese females having general malaise during pre- and during menstruation periods,

(2) Exclusion criteria

Omitted

(3) Selection criteria

- i. Persons who were judged having no problem for participation by a doctor
- ii. Among person with criteria i having relatively higher MDQ scores.

(4) Test sample

Aguaje group: A capsule containing 50 mg of Aguaje extract

Placebo group: Placebo capsule

(5) Testing period

8 weeks

(6) Dosage

Aguaje group: taking 2 Aguaje capsules once a day with water before breakfast

Placebo group: taking 2 placebo capsules once a day with water before breakfast

(7) Primary outcomes

- i. MDQ (Menstrual Distress Questionnaire) Japanese version
 - a. Contents: Evaluate QOL using MDQ before, during and post menopausal periods.
 - b. Evaluating term: total score, lower scale, each term

【Lower terms】

Pain、Water Reten、Auto React、Neg Affect、Impair Conc、Behave Change、Arousal、Control

【Items】

「Stiffed muscle」 「Headache」 「Lower abdominal pain」 「Lumber pain」 「Fatigue」 「Body pain」 「Increase in bodyweight」 「Skin roughness, skin trouble」 「Breast pain」 「bloatedness in breast and abdomen」 「Dizzy」 「Cold sweat」 「Nausea, vomiting」 「hot flash」 「Feeling loneliness」 「Feeling anxiety」 「Mood swing」 「Tearing」 「Frustrated」 「Tension」 「Melancholy」 「Feel upset」 「Insomnia」 「Forgetful」 「Difficulty in consideration」 「Lucking consideration」 「Lucking concentration ability」 「Getting distraction」 「Making slight mistakes」 「unable to move as expected」 「Reduction of performances in schools and office」 「Taking a nap, difficulty in waking up」 「Shut-in」 「Hesitating to meet others」 「Decrease in working performances」 「Beloved feeling」 「Feel organized」 「Exhilarated feeling」 「Feeling happy」 「Energetic active」 「Choking」 「Chest pain」 「Ringing ears」 「Numbness」 「pricking pain」 「Narrowing eye sight」

- c. Evaluation: 0 to 4 scale.
 - 0.「No symptoms」、1.「Slight symptom or slightly feel」、2.「moderate feeling (symptoms)」、3.「Strong feeling (symptoms)」、4.「Severe feeling (symptoms)」
- (8) Secondary symptoms
 - i. MOS Short-Form 36-Item Health. Survey (SF-36)
 - a. Parameters
 - 【Summary score】
Physical component summary (PCS), mental component summary (MCS), Role/Social component summary (RCS)
 - 【Lower scale】
Physical performance, daily physical roles, body pain, healthy feeling, vitality, socially living functions, daily mental roles, emotional health
- (9) Measurements
 - Breast size

【Results】

In primary outcomes (MDQ), 4-week Aguaje consumption significantly improved “Feeling exhilarated” in pre-menopausal period (Fig. 11). By 8-week consumption, summary score, water retention, concentration ability and control were significantly improved during menopausal period. As lower MDQ means good conditions, Aguaje consumption seems to improve these parameters.

Referring a table below Fig. 14, Aguaje extract was found to improve cold sweat and tearing in menstruation period by 8-week consumption. Improving trends were also observed in breast pain, bloatedness in breast and abdomen, feeling anxiety, mood swing, tearing, getting distraction, making slight mistakes and unable to move expected.

In SF-36 parameters, RCS and daily mental role were significantly improved in Aguaje group. In lower scales,

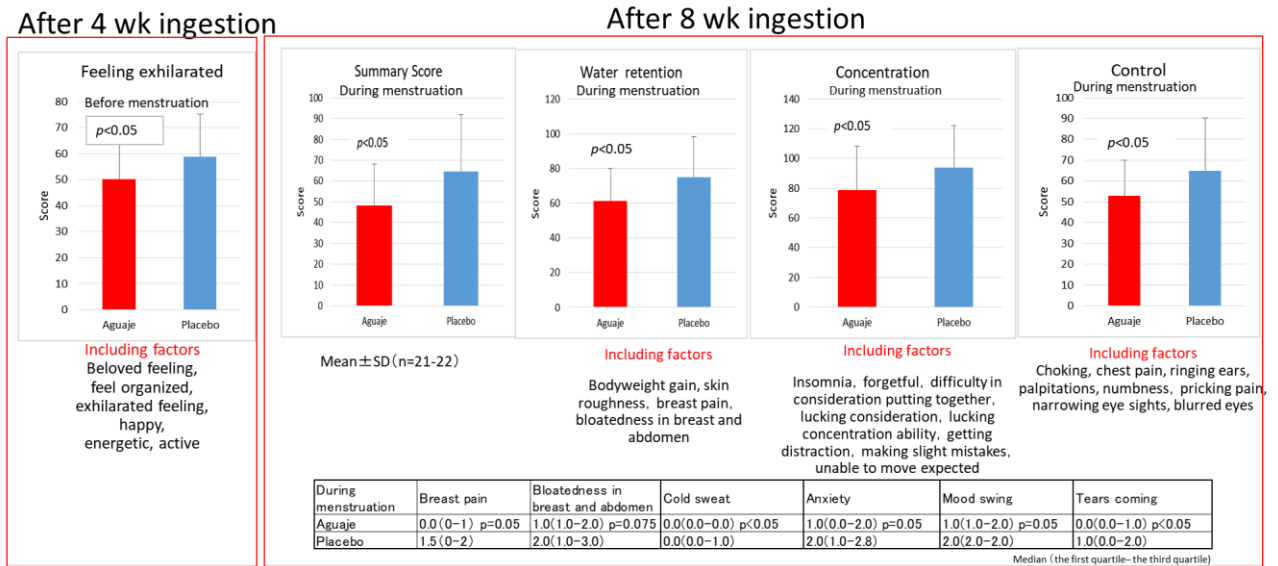


Fig. 11. Parameters showing significant differences to placebo group

Then we plotted BMI and breast size (top - under) to analyze effect of Aguaje extract on breast size. Trend of increasing in breast size was observed in subjects with less than 20 kg/m² of BMI (Fig. 12).

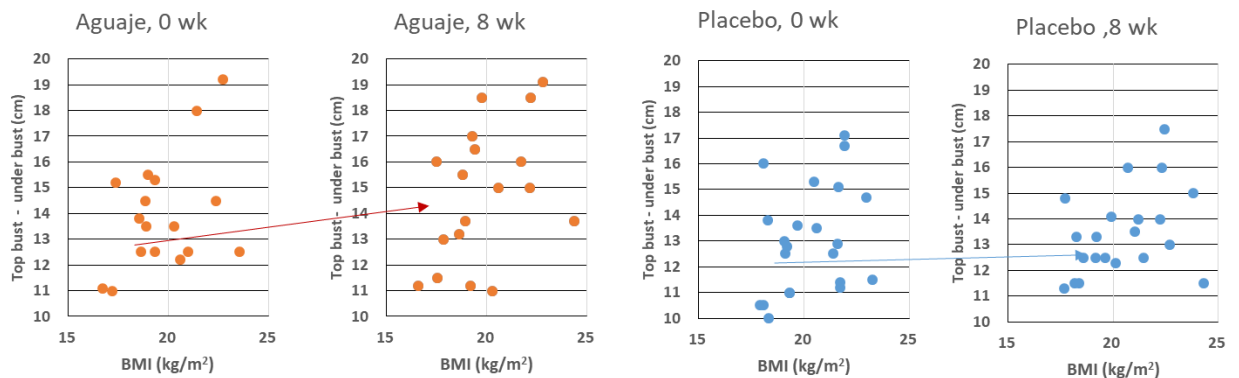


Fig. 12. Relationship of breast size and BMI

Moreover, as a result of plotting age and breast size, positive trend was observed in Aguaje group (Fig. 13). Similar results were obtained by plotting same parameters of before and after consumption of capsules (Fig. 14). Before the consumption, Aguaje group showed negative trend. Instead, the group showed horizontal trend after 8-week Aguaje consumption. However, placebo group maintained negative trends in both before and after capsule consumption.

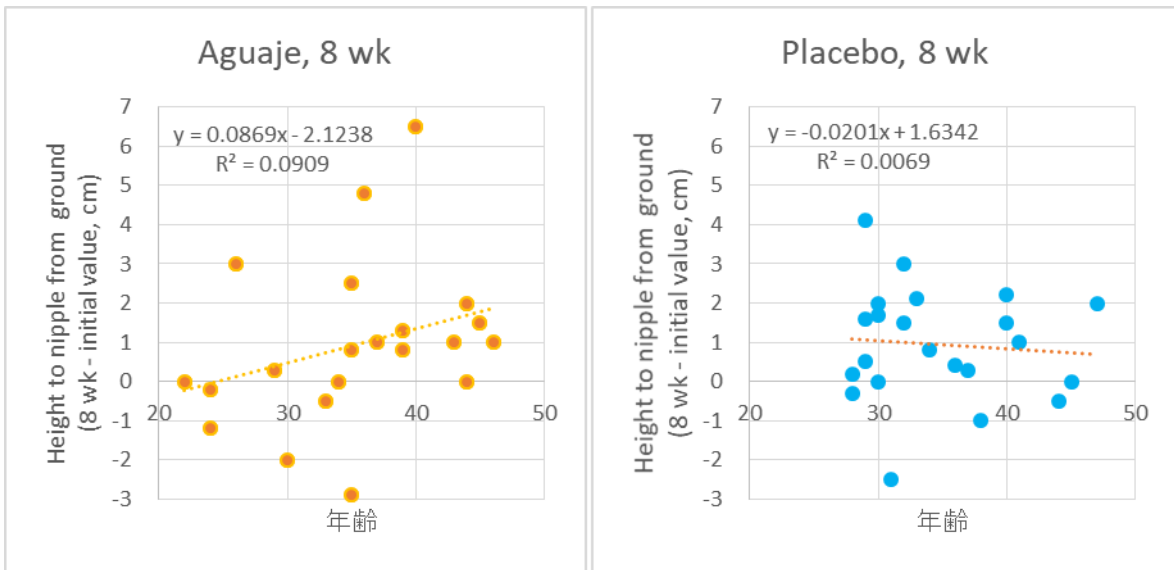


Fig. 13. Relationship between age and breast height.

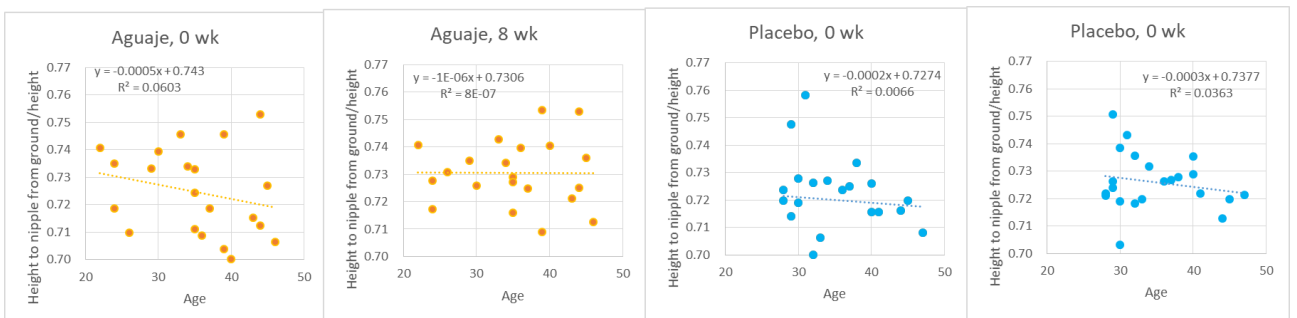


Fig. 14. Relationship between age and height of breast top from ground.

Thus, 8-week Aguaje extract consumption was found to enlarge breast in subjects with relatively skinny style. In addition, preventive effect on breast sagging toward aging. These clinical results are reported in the academic paper “Functional Foods and Health and Disease, 2020; 10 (9): 379-396”.

7. Stability of Aguaje Extract

(1) Heat stability

We heated Aguaje extract at 120°C for 1 hr. to examine heat stability. As a result, DMM content was slightly decreased (8%). DMM seems to be relatively stable at the temperature on processing foods (Fig. 18).

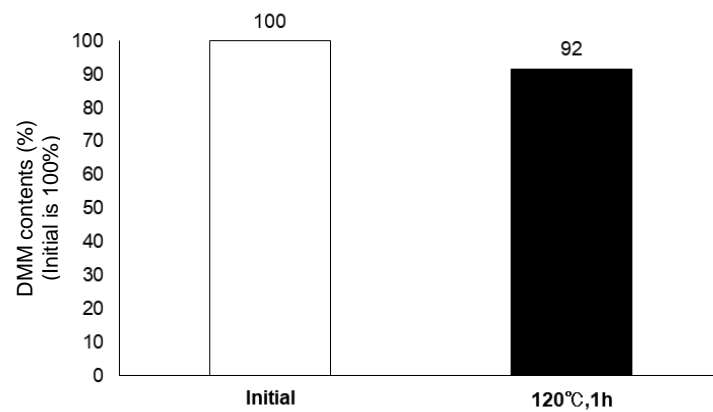


Fig. 18. Heat stability of Aguaje extract

8. Nutrition facts

Per 100g edible portion	Extract	P	L	Method
Water (g)	<0.1	3.7	33.5	Heat drying at atmospheric pressure
Protein (g)	<0.1	0.5	<0.1	Kjeldahl method Constant: 6.25
Fat (g)	99.9	48.0	38.4	*1)
Ash (g)	<0.1	0.6	0.1	Direct incineration
Carbohydrate (g)	0.1	64.5	28.1	*2)
– Sugar (g)	0.1	48.0	28.1	*3)
– Fiber (g)	<0.1	16.5	<0.1	Prosky method
Energy (kcal)	900	503	458	*4)
Sodium (mg)	1.0	14.4	8.5	Atomic absorption spectrophotometry
Sodium chloride equivalent (g)	0.01	0.04	0.02	*5)

*1) 100 – (water + insoluble fraction in ether)

*2) 100 – (water + protein + fat + ash)

*3) 100 – (Water + protein + fat + fiber + ash)

*4) Energy conversion: protein 4, fat 9, sugar 4, fiber 2

*5) Calculated from sodium

Test trustee: Food Analysis Technology Centre SUNATEC

Date of analysis : May 25, 2018 (Extract), May 25, 2018 (P) , June 8, 2018 (L)

Test No. : 180515525-001-01 (Extract), 180515525-002-01 (P) , 180524533-001-01 (L)

9. Safety

(1) Residual Agricultural Chemical

We examined residual agricultural chemicals for 535 chemicals in Aguaje extract. No residual agricultural chemicals were detected,

Test trustee : Masis, Date : March 27, 2018

Test No. : 118279

Sample name: Aguaje oil (extract)

(2) Acute toxicity (LD₅₀)

Acute Toxicity of Aguaje Extract was conducted according to the Guidelines for Single-Dose Toxicity Tests for Pharmaceutical Products where Aguaje Extract 2,000 mg/kg was orally given to mice (ICR, 7-week old). And the mice were observed for 14 days. No abnormalities and fatal event observed at 2,000 mg/kg. No abnormalities of organs observed under macroscopic examination upon autopsy. Thus, LD₅₀ of Aguaje Extract is deduced to be >2,000 mg/kg.

(3) Mutagenicity

Ames test was conducted to evaluate the mutagenicity of Aguaje Extract using *Salmonella typhimurium* TA98, TA100, TA1535, TA1537 and E.coli WP2 at concentration 19.5 – 5,000 µg/plate, no mutagenicity was observed.

10. Recommended dosage

We recommend 100 mg/day of Aguaje extract, 330 mg/day of Aguaje extract-P and -L based on the result of clinical trial.

11. Application

	Application	Claims	Examples
Food	Nutritional supplement Beauty Food	Estrogenic activity , breast enlargement, ammeriolation of perimenopausal and premenpausal anxieties	Beverages, hard & soft capsules, tablets candies, chewing gums, chocolates, wafers, jellies, ham, sausage, etc.

12. Packaging

Aguaje extract

1 kg, 5 kg, 16 kg

Interior packaging : Tin can

Exterior packaging : Cardboard

Aguaje extract-P -powder

1 kg, 5kg

Interior packing: Aluminum bag

Exterior packaging: Cardboard

Aguaje extract--L

1 kg

Interior packing: Polyethylene bottle

Exterior packing: Cardboard

5 kg, 20 kg

Interior packing: Cubic polyethylene container

Exterior packing: Cardboard

13. Storage

Avoid high temperature and humid. Store in cool, dry dark place.

14. Example

Aguaje extract

Moriche palm oil / Mixed tocopherol

Aguaje extract-P

Maltodextrin, moriche palm oil / Acacia gum, mixed tocopherol

Aguaje extract-L

Purified water, moriche palm oil / glycerin ester of fatty acid, glycerin, antioxidant (mixed tocopherol)

Aguaje powder

Moriche palm powder

PRODUCT STANDARD

PRODUCT NAME : **AGUAJE EXTRACT** (FOOD)

This product is an oil extracted from Moriche palm (*Mauritia flexuosa*) fruits. It guarantees minimum of 20 µg/g of DMM.

<u>Appearance</u>	Grayish orange brown to orange oil with slightly characteristic odor.	
<u>Acid Value</u>	Max. 10.0	
<u>DMM* contents</u>	Min. 20 µg/g	(HPLC)
<u>Purity Test</u>		
<u>(1) Heavy Metals (as Pb)</u>	Max. 20 ppm	(Sodium Sulfide Colorimetric Method)
<u>(2) Arsenic (as As₂O₃)</u>	Max. 1 ppm	(Standard Methods of Analysis in Food Safety Regulation, The Third Method, Apparatus B)
<u>Standard Plate Counts</u>	Max. 1×10 ² cfu/g	(Analysis for Hygienic Chemists)
<u>Moulds and Yeasts</u>	Negative	(Analysis for Hygienic Chemists)
<u>Coliforms</u>	Negative	(Analysis for Hygienic Chemists)

<u>Composition</u>	<u>Ingredient</u>	<u>Content</u>
	Moriche Palm Oil	99.9%
	Mixed Tocopherol	0.1%
	Total	100.0%

<u>Expiry date</u>	2 years from date of manufacturing.
<u>Storage</u>	Store in a dry, ventilated location. Keep away from high temperature and sun light.

*Dihydroxy-Methoxy-Methylflavan

PRODUCT STANDARD

PRODUCT NAME : **AGUAJE EXTRACT-P** (FOOD)

This product is powder of oil extracted from Moriche palm (*Mauritia flexuosa*) fruits.
It guarantees minimum of 5 µg/g of DMM.

<u>Appearance</u>	Pale yellowish white to pale orange white powder with slightly characteristic odor.	
<u>DMM* contents</u>	Min. 5 µg/g	(HPLC)
<u>Loss on Drying</u>	Max. 10.0 %	(Analysis for Hygienic Chemists, 1 g, 105°C, 2 hr)
<u>Purity Test</u>		
<u>(1) Heavy Metals (as Pb)</u>	Max. 20 ppm	(Sodium Sulfide Colorimetric Method)
<u>(2) Arsenic (as As₂O₃)</u>	Max. 1 ppm	(Standard Methods of Analysis in Food Safety Regulation, The Third Method, Apparatus B)
<u>Standard Plate Counts</u>	Max. 1×10 ³ cfu/g	(Analysis for Hygienic Chemists)
<u>Moulds and Yeasts</u>	Max. 1×10 ² cfu/g	(Analysis for Hygienic Chemists)
<u>Coliforms</u>	Negative	(Analysis for Hygienic Chemists)
<u>Composition</u>	<u>Ingredient</u>	<u>Content</u>
	Maltodextrin	50.00%
	Moriche Palm Oil	29.97%
	Acacia Gum	20.00%
	<u>Mixed Tocopherol</u>	<u>0.03%</u>
	Total	100.00%
<u>Expiry date</u>	2 years from date of manufacturing.	
<u>Storage</u>	Store in a dry, ventilated location. Keep away from high temperature and sun light.	

*Dihydroxy-Methoxy-Methylflavan

PRODUCT STANDARD
PRODUCT STANDARD

PRODUCT NAME : **AGUAJE EXTRACT-L** (FOOD)

This product is water soluble emulsion of oil extracted from Moriche palm (*Mauritia flexuosa*) fruits.

It guarantees a minimum of 5 µg/g of DMM.

<u>Appearance</u>	Pale yellowish white to orange white liquid with slightly characteristic odor.	
<u>DMM* contents</u>	Min. 5 µg/g	(HPLC)
<u>Purity Test</u>		
<u>(1) Heavy Metals (as Pb)</u>	Max. 20 ppm	(Sodium Sulfide Colorimetric Method)
<u>(2) Arsenic (as As₂O₃)</u>	Max. 1 ppm	(Standard Methods of Analysis in Food Safety Regulation, The Third Method, Apparatus B)
<u>Standard Plate Counts</u>	Max. 1×10 ³ cfu/g	(Analysis for Hygienic Chemists)
<u>Moulds and Yeasts</u>	Max. 1×10 ² cfu/g	(Analysis for Hygienic Chemists)
<u>Coliforms</u>	Negative	(Analysis for Hygienic Chemists)

<u>Composition</u>	<u>Ingredient</u>	<u>Content</u>
	Purified Water	35.00%
	Moriche Palm Oil	29.97%
	Glycerin Ester of Fatty Acid	20.00%
	Glycerin	15.00%
	<u>Mixed Tocopherol</u>	<u>0.03%</u>
	Total	100.00%

Expiry date 2 years from date of manufacturing.

Storage Store in a dry, ventilated location. Keep away from high temperature and sun light.

*Dihydroxy-Methoxy-Methylflavan

PRODUCT STANDARD

PRODUCT NAME : **AGUAJE POWDER** (FOOD)

This product is dried powder of Moriche palm (*Mauritia flexuosa*) fruits.

<u>Appearance</u>	Pale brown to brown powder with slightly characteristic odor.	
<u>Loss on Drying</u>	Max. 10.0 %	(Analysis for Hygienic Chemists, 1 g, 105°C, 2 hr)
<u>Purity Test</u>		
<u>(1) Heavy Metals (as Pb)</u>	Max. 20 ppm	(Sodium Sulfide Colorimetric Method)
<u>(2) Arsenic (as As₂O₃)</u>	Max. 1 ppm	(Standard Methods of Analysis in Food Safety Regulation, The Third Method, Apparatus B)
<u>Standard Plate Counts</u>	Max. 3×10 ³ cfu/g	(Analysis for Hygienic Chemists)
<u>Moulds and Yeasts</u>	Max. 1×10 ³ cfu/g	(Analysis for Hygienic Chemists)
<u>Coliforms</u>	Negative	(Analysis for Hygienic Chemists)
<u>Composition</u>	<u>Ingredient</u>	<u>Content</u>
	Moriche Palm Fruits	100.0%
<u>Expiry date</u>	2 years from date of manufacturing.	
<u>Storage</u>	Store in a dry, ventilated location. Keep away from high temperature and sun light.	

ORYZA OIL & FAT CHEMICAL CO., LTD. striving for the development of the new functional food materials to promote health and general well-being.

From product planning to OEM - For any additional information or assistance, please contact :

ORYZA OIL & FAT CHEMICAL CO., LTD.
No.1, Numata Kitagata-cho, Ichinomiya-city, Aichi-pref.,
493-8001 JAPAN
TEL : +81 (0) 586 86 5141
FAX : +81 (0) 586 86 6191
URL/http : //www.oryza.co.jp/
E-mail : info@oryza.co.jp



Tokyo Office

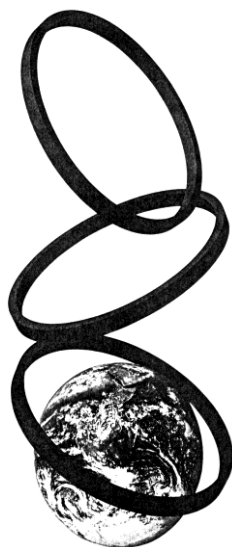
5F Diamant-building 1-5 Kanda-suda-cho Chiyoda-ku, Tokyo, 101-0041 Japan
TEL: +81 (0) 3 5209 9150
FAX: +81 (0) 3 5209 9151
E-mail: tokyo@oryza.co.jp

***The unapproved copy of this catalogue and appropriation are forbidden
except for the exception on the Copyright Act.**

*The contents of this catalogue may be changed without prior notice.

Established Date: June 21, 2018

Revised Date: August 17, 2021



ORYZA OIL & FAT CHEMICAL CO., LTD.